

ILLUSTRATIONS FOR SIMULTANEITY OF ETERNITY IN THE DEVELOPMENT OF IDEAS. From Pierre Beaudry, June 2009.

1- THE DISCOVERY OF FALSE AND TRUE UNIVERSALS.

2- THE PYTHAGOREAN THEOREM AND THE POETIC PRINCIPLE.

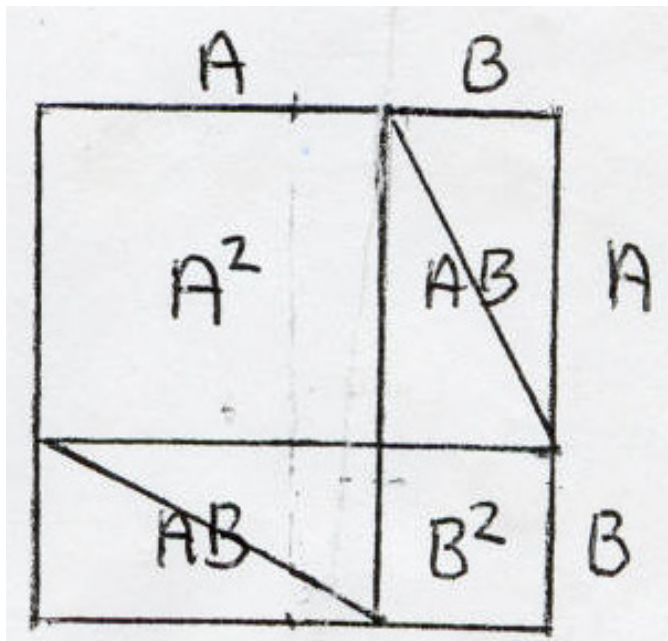


Figure 1.  $(A + B)^2 = A^2 + 2AB + B^2$

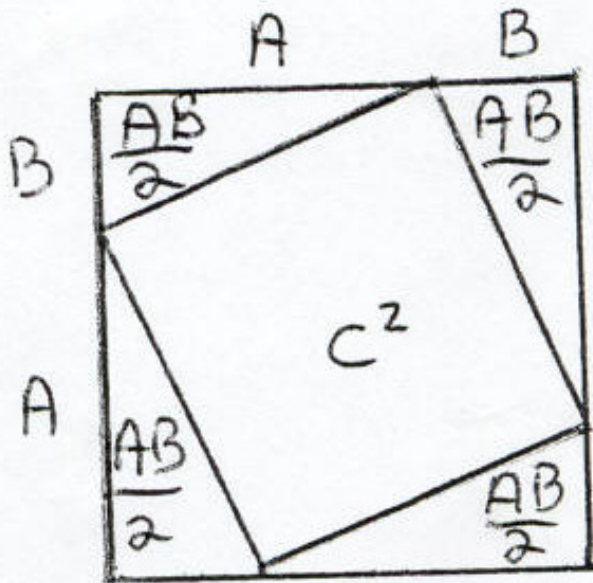


Figure 2.  $(A + B)^2 - 2AB = C^2$

**3- THE CAVES OF ANUBIS OR THE ANCIENT EGYPTIAN DISCOVERY OF THE EQUINOX IN THE SIMULTANEITY OF ETERNITY.**

<http://www.youtube.com/watch?v=J6PbkgFYyp8&feature=Playlist&p=25CFCFFED02F7161&index=1>



Figure 3. The Anubis Panel. Epigraphic design showing the process of discovery of the equinox in Cave Two of the *Caves of Anubis* discovered by Gloria Farley in Oklahoma, in 1978. (Scale drawing by Dr. Clyde Keeler from Gloria Farley, *In Plain Sight*.)

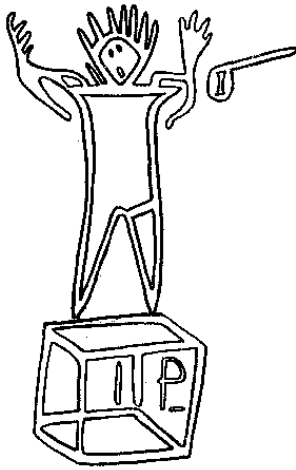


Figure 4. Petroglyph of the Sun-God

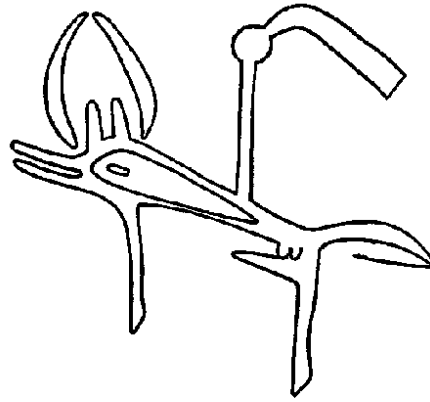
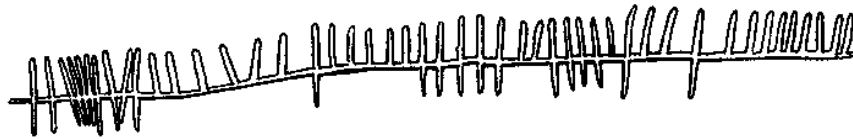


Figure 5. Petroglyph of Anubis



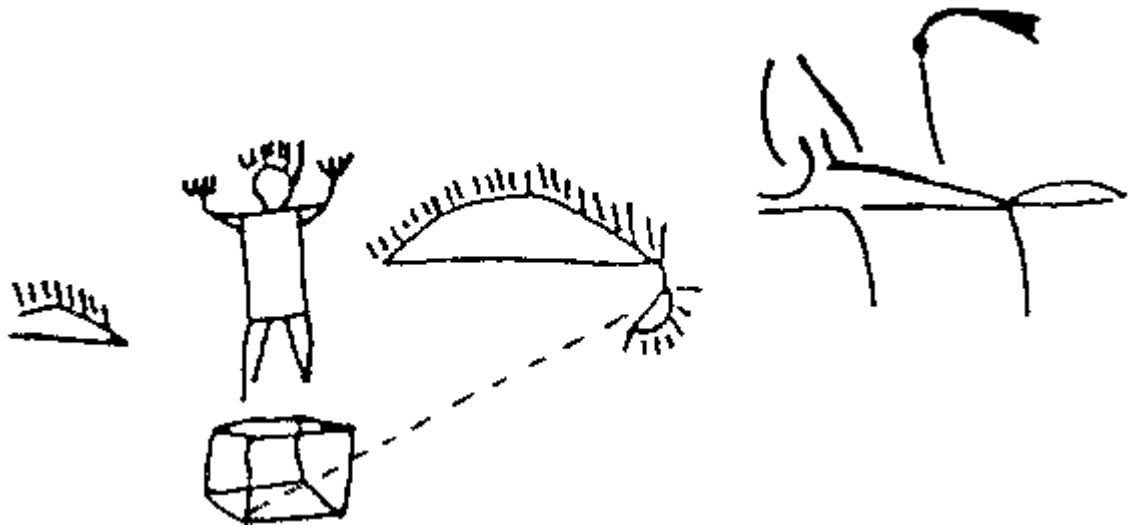
G---R-----N 6 M T---D G---N D---S H--M-D M C---T-D

Figure 6. The *Six-Months inscription* from Cave one. Transliteration by Barry Fell



Figure 7. Anubis weighing a human soul against the feather of Maat.

**“At the instant of sunset came the climax when three things happened simultaneously. The shadow of the thumb pointer exactly filled the curve of the Vertical Sun, the head of the Sun God, including the rayed crown, fell into shadow, and the entire figure of Anubis, including his flail, was illuminated. A second later, when the sun had slipped behind the mesa, the entire panel was in shadow. The show was over for another six months. It must be emphasized that the above described alignments happen only at the sunset nearest the actual hour of the equinox. The day before or the day after, the pointer does not travel exactly from corner to corner of the cube, the sun symbols do not fall into light or shadow in a meaningful way, and the pointer does not fill the exact lines of the curve of the Vertical Sun (Fig. 4-10).**



*Fig. 4-10 Diagram showing path of shadow pointer during sunset on the day of the equinox. Drawing by Polansky.*

The artist or artists who laid out this panel also understood the ancient Egyptian concept of day and night, of the sun ruling the sky by day and at sunset sinking into the underworld of darkness, guarded by Anubis, the God of the Dead. This association with Anubis is explained more fully in the next chapter.” (Gloria Farley, *In Plain Sight.*)

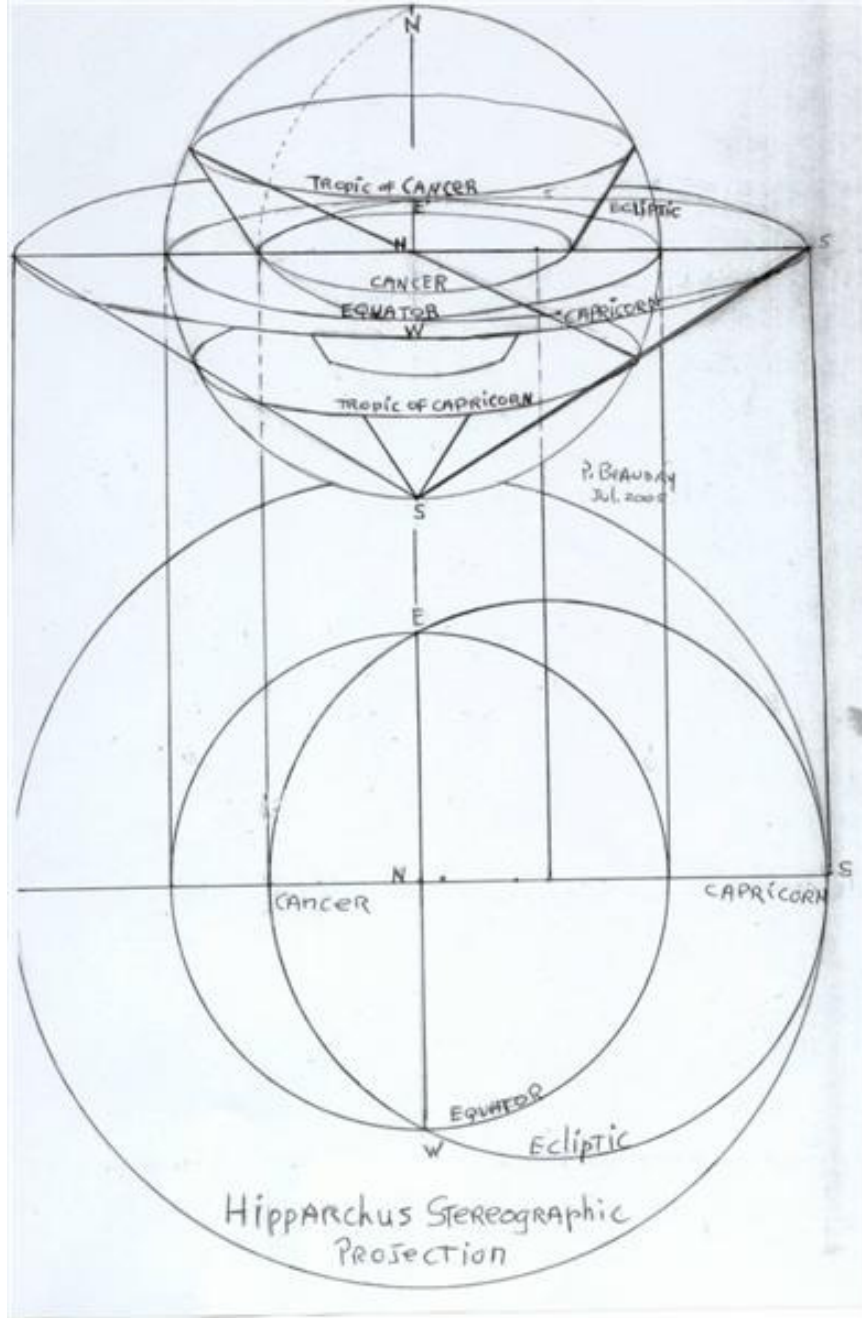


Figure 8. The Hipparchus hypothesis for the stereographic projection of the equinoxes.